

# RANGE STANDING ORDERS

## 1 Shooting range/multi-range site (complex) name

Thames Valley Deerstalkers Range Complex.

## 2 Names of individual ranges *(if applicable)*

1. Range 1 – 100m (Rifle/Pistol/Shotgun) Range.
2. Range 2 – 50m (Moving target rifle) Range.
3. Range 3 – 50m (Rifle) Range.
4. Range 4 – Sporting Clay Range.
5. Range 5 – Target Archery Range.
6. Range 6 – Field Archery Range.
7. Range 7 - Field Archery Range.

## 3 RSOs date *(date RSOs were authorised)*

27 November 2024

## 4 Introduction

### Information about the range

Sited at 101 Morrison Road, (Komata), Paeroa

**New Zealand Deerstalkers' Association (Thames Valley Branch Inc) Incorporated is the Shooting Range Operator of these ranges.**

### The legal description of the Range area is:

Pt Lot 1 DPS 89918

### The legal description of the land covered by Range 4 danger area are:

Pt Lot 2 DPS 89918,  
Pt Lot 3 DPS 89918,  
Pt Lot 3 DP 503236 Komata South 1B1 Block,  
Ohinemuri 20B3 Block

**The name of the landowner(s) or controlling authority that approve the use of their land as a shooting range**

**New Zealand Deerstalkers' Association (Thames Valley Branch Inc) Incorporated.**

<b>Hours of operation</b>
<ul style="list-style-type: none"> <li>• 7am – dusk for all shooting disciplines (outside Daylight Saving) OR</li> <li>• 7am to dusk for the rest of the year for organised club or committee approved events.</li> </ul> <p><b>HOWEVER</b></p> <ul style="list-style-type: none"> <li>• 7am – 7.30pm during DAYLIGHT SAVING for centrefire and shotguns (including .22 magnums) when the range is used casually by individuals. The use of .22 long rifle rimfire, air rifle shooting and archery is permitted to continue through from 7.30pm to dusk for casual use of the ranges during DAYLIGHT SAVING.</li> </ul>
<p><b>NO SHOOTING IS PERMITTED ON:</b></p> <ul style="list-style-type: none"> <li>• Christmas Day (all day)</li> <li>• Boxing Day (all day)</li> <li>• ANZAC Day until after 12 noon</li> </ul>
<b>5 Responsibility</b>
<b>Name of the SRO</b>
The Shooting Range Operator (SRO) is the New Zealand Deerstalkers Association – Thames Valley Branch Inc.
<b>The person in charge of the day-to-day administration, management, and maintenance of the range</b> (if not the SRO)
The New Zealand Deerstalkers Association – Thames Valley Branch Inc. Committee is responsible for the day-to-day administration, management, and maintenance of the range.
<b>6 Compliance with Range Standing Orders (RSOs)</b>
<ul style="list-style-type: none"> <li>• All users of the range are subject to these RSOs.</li> <li>• User organisations permitted use of these facilities will have their approval withdrawn if they do not adhere to these RSOs.</li> </ul>
<p>Any deviations from the RSO's will be dealt with by the Thames Valley Deerstalkers Association committee on a case-by-case basis; and their decision is final.</p> <p>User organisations permitted use of these facilities will have their approval withdrawn if they do not adhere to these RSOs.</p>
<b>7 Range Location</b>
101 Morrison Road, Paeroa
<b>NZTM map sheet number and grid reference</b>
Topo 50 Map BC35 (Paeroa)      NZTM Grid : 3845 : 6246    at the Club rooms.

## 8 Approved range users and priority of use

- Thames Valley Deerstalkers Association events.
- NZ Police for Training Purposes (see Annex F).
- Ohinemuri Fish and Game Incorporated.
- Te Aroha Fish and Game Incorporated.
- NZ Deerstalkers Association – Waikato Branch.
- NZ Deerstalkers Association – Te Awamutu Branch.
- NZ Deerstalkers Association – South Auckland Branch.
- Any additional events as approved by the TVDA Committee on a case-by-case basis.
- General TVDA members for sighting in purposes etc.

**Note:** The range is not to be allocated for use by non-affiliated associations without the written authority of the Management Committee of **New Zealand Deerstalkers' Association – Thames Valley Branch Inc**

**Non-Members are able to use the range but only under the direct supervision of an approved Officer on Duty who is a Member of Thames Valley Deerstalkers' Association, or a qualified NZDA Range Officer or a NZCTA Shooting Referee who has completed and passed a current TVDA Range Induction and with the approval of Thames Valley Deerstalkers Association.**

## 9 Warning flags and danger signs

**1) Range Danger Flags and warning signs are to be enabled at the following locations prior to commencement of any firing.**

- a) The Range status sign's "Danger Range in Use" warning shall be displayed at the entrance gate on the access road when the ranges are open for use.
- b) Red warning "Range in Use" flags shall be flown when the range is open for use at:
  - The flagpole at main gate
  - The flagpole on the 100m shooting area.
  - The barrier arm on the driveway (this MUST be across when all rifle ranges are being used)
  - On the closed gate immediately to the Left of the shooting target area
  - ALL warning **flags** must be lowered when the range is closed / finished being used.
  - All access gates must be closed when the shooting complex is not being used.
  - Refer to the Range Location and Access Plan for locations of flags and this signage (see Annex A).

## 10 Description of individual ranges, restrictions, and conditions of use (in numerical order)

Range 1	Range 1
Range description	100 metre Rifle, pistol, shotgun, multi discipline outdoor Reduced Danger Area Range with 100m Pop-over.
Restrictions	<ol style="list-style-type: none"> <li>1) Rifles using ammunition up to a muzzle energy no greater than 7000j (see Annex E).</li> <li>2) Rifles firing pistol calibres up to and including 0.50in calibre.</li> <li>3) Shotguns up to and including 12 bore (bird/buck shot only).</li> <li>4) Black powder and muzzle loading firearms up to and including 0.75in calibre with a muzzle velocity no greater than 609 m/sec (2000 fps).</li> </ol>

	5) Police approved firearms – Police training only (see Annex F).
<b>Conditions of use</b>	<ol style="list-style-type: none"> <li>1) Down range shooting only.</li> <li>2) Rifles; including those firing pistol calibres and Black Powder from 100m and 50m firing points forward.</li> <li>3) Rifles, pistols, and shotguns from the 25m forward</li> <li>4) Paper/soft targets e.g. cardboard coreflute <b>ONLY</b> are to be used unless approved by the Range Officer.</li> <li>5) All non-paper/soft targets are engaged from the 25m firing line forward and are to be placed in such a way as to capture any ricochet and/or splatter. A shroud may be required and placed at a height to ensure ricochet or splatter is captured.</li> <li>6) All targets should be placed at the target line, all paper/soft targets to be placed in the target frames at the correct target centre height for the distance being shot as marked on the target frame.</li> <li>7) The Range Officer or TVDA Officer on Duty to ensure that any target set-up is deemed safe and complies with range specifications.</li> <li>8) All access points to the active range area are to be closed and access from Range 2 and 3 must be closed off.</li> </ol>
<b>Range 2</b>	<b>Range 2</b>
<b>Range description</b>	50 Metre moving target multi discipline outdoor rifle No Danger Area Range
<b>Restrictions</b>	<ol style="list-style-type: none"> <li>1) Rifles of 0.22in calibre using 0.22in LR ammunition only.</li> <li>2) Air Rifles up to and including 0.22in calibre.</li> </ol>
<b>Conditions of use</b>	<ol style="list-style-type: none"> <li>1) Down range shooting only.</li> <li>2) Firing only from 50m firing points inside the shooting shed.</li> <li>3) All static targets are to be paper/soft targets e.g. cardboard, coreflute are to be placed in/on target frames/boards at the correct target centre height and placed in the frame holders.</li> <li>4) All non-paper/soft targets are engaged from the 50m firing line forward and are to be placed in such a way as to capture any ricochet and/or splatter. A shroud may be required and placed at a height to ensure ricochet or splatter is captured.</li> <li>5) <b>Reactive Silhouette targets</b> – are to be placed at the target line, and to be placed at the correct target centre height for the distance being shot. When Silhouette shooting is taking place no one is to be in the target scoring shed area or between the shooting shed and the targets.</li> <li>6) When using the moving target range; the red flags must be flown at both ends of the baffled area of the range. When the scorers have both communicated with the Range Officer in the shooting shed that they are ready for shooting to commence, both flags are to be lowered and the range is deemed Open, and shooting may commence. If one or</li> </ol>

	<p>both flags appear; all shooting must Cease Immediately.</p> <p>7) Moving targets can only be engaged when they appear between the left and right arcs of the opening of the baffled face/markers gallery. Paper/soft targets only e.g cardboard coreflute to be used for moving targets.</p> <p>8) No Shooting can recommence until the Range Officer deems that the range is Open again and safe to continue shooting.</p> <p>9) The Range Officer to ensure that any target set-up is deemed safe and complies with range specifications.</p> <p>10) All access points to the active range area to be closed and access from Range 1 must be closed off. Range 3 is not to be used when this range is in use.</p>
<b>Range 3</b>	<b>Range 3</b>
<b>Range description</b>	50 Metre multi discipline outdoor No Danger Area rifle range
<b>Restrictions</b>	<p>1) Rifles of 0.22in calibre using 0.22in LR ammunition only.</p> <p>2) Air Rifles up to and including 0.22in calibre.</p>
<b>Conditions of use</b>	<p>1) Access to this range is down past the Running Boar Shed and the relevant flags must be flown.</p> <p>2) If accessing this area from the main central roadway; this must be cleared with anyone on Range 1 (if applicable) before you leave the main carpark and all relevant gates are shut and flags are flown.</p> <p>3) Down range shooting only.</p> <p>4) Rifles from 50m forward.</p> <p>5) Paper/soft targets e.g. cardboard coreflute <b>ONLY</b> are to be used unless approved by the Range Officer.</p> <p>6) All targets should be placed at the target line, all paper/soft targets to be placed in the target frames at the correct target centre height for the distance being shot as marked on the target frame.</p> <p>7) All non-paper/soft targets are engaged from the 50m or 25m firing line forward and are to be placed in such a way as to capture any ricochet and/or splatter. A shroud may be required and placed at a height to ensure ricochet or splatter is captured.</p> <p>8) This range (Range 3) is <b>NOT</b> to be used when events on either of Range 4 Fields are in operation – North Field OR South Field.</p> <p>9) The Range Officer or TVDA Officer on Duty to ensure that any target set-up is deemed safe and complies with range specifications.</p> <p>10) All access points to the active range area are to be closed and any access points from Range 1 must be closed off. Ranges 2 is not to be used when Range 3 is in use.</p>
<b>Range 4</b>	<b>Range 4 (comprises of parts: North Field and South Field)</b>
<b>Range description</b>	<p>A Full Danger Area Sporting Clay outdoor range, with multiple shooting stations incorporating a DTL layout within the south field shooting box. Range 4 is split into two sections – the North Field and the South Field. These can be used separately or as one complete Field but that must be specified throughout this set of Range Standing Orders. <b>This range is only for TVDA Organized and/or approved events – strictly no casual use.</b></p>
<b>Restrictions</b>	<p>1) Approved Shotguns up to and including 12 bore.</p> <p>2) Approved shot size is Shot 7-9.</p>

<b>Conditions of use</b>	<ol style="list-style-type: none"> <li>1) Shooting only from within a stand for Sporting and from the designated DTL firing points to ensure correct arcs of fire are maintained.</li> <li>2) Only approved frangible clay targets are to be used.</li> <li>3) Stands are only to be set out in accordance with the Range Layout as approved for these RSOs (see Annex B).</li> <li>4) The Range Officer has the responsibility to ensure that any target, stand set-up is deemed safe and complies with range approval specifications.</li> <li>5) All access points to the active range danger area are to be closed and all other ranges must be closed while <b>both</b> components of Range 4 are in use at the same time – both the North Field <b>AND</b> the South Field. The Range Officer must ensure all competitors are safe while following the course layout.</li> <li>6) The South Field of Range 4 can operate in conjunction with archery events on Range 6 only; so long as both activities are supervised by a Range Officer for each Range while the activities are being held.</li> <li>7) Temporary danger signs, barriers etc. are to be placed in the appropriate danger areas outside the club boundary depending on the layout being used and due to its variable nature.</li> <li>8) If the danger area is contained within the club boundaries i.e. The DTL trap located within the south sporting field and limited to 60 deg arc +/-30 deg from a centre line of 8 deg grid only the fixed perimeter danger signs are required. If the arcs are set to normal DTL, then condition 6 above applies.</li> </ol>
<b>Range 5</b>	<b>Range 5</b>
<b>Range description</b>	Target Archery Range
<b>Restrictions</b>	1) Bows of any design <b>EXCEPT CROSSBOWS</b> are permitted to be used on Thames Valley Deerstalkers Range Archery Range/s.
<b>Conditions of use</b>	<ol style="list-style-type: none"> <li>1) Down range shooting only.</li> <li>2) Paper, Vinyl, cardboard, approved 3D designed targets only to be used.</li> <li>3) Targets must all be placed in accordance with TVDA Bowhunters Field Layout Guidelines</li> <li>4) The Range Officer / Approved Field Setter has the responsibility to ensure that any target set up is deemed safe and complies with range approval Guidelines.</li> </ol>
<b>Range 6</b>	<b>Range 6</b>
<b>Range description</b>	Field Archery Range – <b>FOR CLUB EVENTS ONLY</b>
<b>Restrictions</b>	1) Bows of any design <b>EXCEPT CROSSBOWS</b> are permitted to be used on Thames Valley Deerstalkers Range Archery Range/s
<b>Conditions of use</b>	<ol style="list-style-type: none"> <li>1) Down range shooting only.</li> <li>2) Paper, Vinyl, cardboard, approved 3D designed targets only to be used.</li> </ol>

	<p>3) Targets must all be placed in accordance with TVDA Bowhunters Field Layout Guidelines.</p> <p>4) The Range Officer / Approved Field Setter has the responsibility to ensure that any target set-up is deemed safe and complies with range approval Guidelines.</p>
<b>Range 7</b>	<b>Range 7</b>
<b>Range description</b>	Field Archery Range – <b>PRACTICE FIELD for Casual Use by Members</b>
<b>Restrictions</b>	1) Bows of any design <b>EXCEPT CROSSBOWS</b> are permitted to be used on Thames Valley Deerstalkers Range Archery Range/s
<b>Conditions of use</b>	<p>1) Down range shooting only.</p> <p>2) This Range 7 is <b>NOT</b> to be used when there is clay target shooting happening on TVDA Ranges</p> <p>3) Under No circumstances are the pegs or targets to be moved</p> <p>4) Paper, Vinyl, cardboard, approved 3D designed targets only to be used.</p> <p>5) Targets must all be placed in accordance with TVDA Bowhunters Field Layout Guidelines.</p> <p>The Range Officer / Approved Field Setter has the responsibility to ensure that any target set-up is deemed safe and complies with range approval Guidelines.</p>

## 11 Range safety roles

### 11.1 Organised Firearms Shooting Events on ALL Ranges

- The following person will be required at any organized firearms shooting event:
  - A Range Officer (RO) must be on duty whenever a range is in use for a Thames Valley Deerstalkers Assn (TVDA) approved or organized event. The RO is to be a person approved by the SRO or TVDA committee, who holds a firearms licence and is appropriately trained in shooting range safety management; and has completed a TVDA Range Induction.

### 11.2 Casual Use of the Firearms Shooting: Range 1 and Range 3 only

- A TVDA Approved Officer on Duty (OD) as a minimum requirement must be on duty whenever Range 1 or Range 3 are in use. The OD or RO is to be a person approved by the SRO or TVDA Committee who holds a firearms licence and has completed a TVDA Range Induction; or
- Any other Shooting Range Safety Officer as may be necessary or required by match rules or TVDA Committee requirements so long as they have been approved by committee of Thames Valley Deerstalkers Assn and the person has completed a TVDA Range Induction.

## 12 Range safety rules

### Range safety rules.

- 1) Safety on the range is the responsibility of all range users.
- 2) **The Safety Barrier on the driveway MUST be across at all times when any Rifle Ranges are being used.**
- 3) **The safety Range Flag MUST be flown at the 100m Range when any Range Events are taking place or any of the Ranges are being used by individuals.**
- 4) The Range Officer / Duty Officer is responsible for ensuring that the range is safe for use prior to the commencement of any shooting activity.
- 5) That the bullet catcher is in good repair.
- 6) That only approved or authorised targets are used on the range.
- 7) Ammunition restrictions are adhered to.
- 8) That there is no person(s) or activity in the danger area.
- 9) That hearing & eye protection is used by all range users and spectators as set out in Item No 18.

**The safety rules for individual shooting disciplines are to be complied with in conjunction with these RSO. Where individual safety rules may contradict these RSO, the RSO are to take precedence.**

### The following safety rules are emphasised.

- 1) When a Range is in use for events it shall at all times be under the control of a Range Officer, whose authority is absolute and all persons on the Range shall act under his or her direction.
- 2) An Officer on Duty is permitted to control the range for "ad hoc / non event" use of the range, BUT only under the Criteria set out for such use – **Appendix D (NO EXCEPTIONS)**
- 3) The Range Officer or an Officer on Duty shall be responsible for the observance of these Ranges Standing Orders and for the reporting of any breach to the Club Committee without delay.
- 4) Firearms are not to be handled unless under the control of a Range Officer or an Officer on Duty or in an approved and designated Safety Zone.
- 5) **Pistol shooting – this is solely for Police purposes ONLY. No other pistols or pistol shooting is to take place on any **Thames Valley Deerstalkers** Range/s without the approval from the Thames Valley Deerstalkers Committee.**

- 6) Loaded firearms must be pointed down-range at all times.
- 7) Do not leave firearms unattended at any time.
- 8) Firearms that are not your own are not to be touched without owner's consent.
- 9) Firearms are not to be loaded unless under the direct control of a Range Officer or a Duty Officer.
- 10) Firearms are not to be handled while people are forward of the firing line.
- 11) No firearm may be removed from the firing point until it has been checked and verified by the Range Officer or an Officer on Duty as being clear.
- 12) Each person using a TVDA Shooting Range for Casual Use (outside of organised events) is required to either Scan the QR Code provided or complete the manual sign in process as is required.

#### *Approved shooting activities*

- Air rifle target shooting
- Rimfire rifle target shooting
- Centrefire rifle target shooting
- Black powder target shooting
- Shotgun – clay target shooting
- Archery – mat and 3D target shooting
- Pistol target shooting – Committee Approval is for POLICE ONLY **(NO EXCEPTIONS)**

### **13 New ammunition use**

**13.1** If a new type of ammunition is proposed for use on the range, it must be approved for use by the SRO. Before inclusion in the RSOs, the requirements of section 34 of these orders are to be adhered to.

### **14 Targets**

**14.1** Paper targets on coreflute only

**14.2** Timber target frames to hold the coreflute at a 1.2m target centre height.

**14.3** For target dimensions and construction of target frames, see Annex B.

#### **14.4**

- 1) Any new targets that fall outside of what is currently permitted in these RSO must be in line with accepted guidelines and approved by the SRO and not used until approval has been authorised following decisions from a Committee Meeting of Thames Valley Deerstalkers Association.
- 2) Minutes of this decision must be kept and held in the Range Register.

## 15 Steel targets

### FOR CERTIFIED AND SPECIFIC RANGE OFFICER SUPERVISED CLUB EVENTS ONLY

- 1) ONLY Approved steel plate targets may be used on the **Thames Valley Deerstalkers property** - *The minimum grade is Bisaloy grade 450 or higher for centrefire targets or black powder targets. (Refer to PNZ Steel Target Safe Use Guide).*
- 2) All steel targets to be inspected and approved by the Range Officer Prior to use.
- 3) All non-reactive steel plate targets to be set at a forward sloping angle of 15 Deg from the vertical to reduce the possibility of ricochets, excluding shotgun patterning board with LEAD SHOT ONLY.
- 4) For 0.22in reactive targets such as 'spinner trees' or similar; these must be shot at with low velocity 0.22in LR firearms or up to and including 0.22 air rifles only and with the targets not more than 1m from the bullet catch area.
- 5) Shrouds may need to be used where steel targets are placed more than 1m from the backstop/bullet catcher.
- 6) H.V Ammunition is Prohibited from use with any steel / hard targets.

## 16 Moving targets

### 16.1 Moving Targets – Running Boar

- 1) For moving targets on Range 2 the left and right arcs are indicated by the opening in the baffled face. Firing outside of these arcs is strictly prohibited.

### Moving Targets – Clay Targets

- 2) Range 4 - shotguns only at frangible targets arcs dictated by stand or arcs prescribed for DTL with a max arc of 60 deg at a bearing of 8 deg grid (see Annex B)

## 17 Minimum safe engagement distances

### 17.1

#### Paper targets into a bullet catcher (gap 7 gravel)

- 3m rifles
- 3m Pistols
- 10m black powder

#### Steel targets AR/bisaloy 450 or above

- 25m shotgun pattern plate
- 25m black powder

#### Steel reactive targets

- 15m 0.22in LR.
- 10m air rifle up to and including 0.22in calibre.

## 18 Eye and hearing protection

### 18.1

- 1) **All** members and visitors to the club ranges are to wear hearing protection at all times while shooting is taking place, and it is highly recommended that all firearm shooters also wear eye protection when shooting.
- 2) **It is compulsory for ALL users closer than 25m on Ranges 1 and 3 including ROs and also:**
- 3) **ALL clay target shooters when shooting and anyone as part of a squad must wear ear and eye protection at all times.**
- 4) **EXEMPTIONS:**
  - The clubhouse and carpark areas are exempt from these requirements.
  - As are those visiting and taking part in archery / bowhunter events.

## 19 Medical and emergency

### 19.1

- 1) First Aid facilities are located at the clubrooms for organised club events; and when the range/s are being used by members for non-organised events/use; the members are responsible for having their own First Aid kits/supplies available.
- 2) ***The nearest Medical Centre is Queen Street, Paeroa***
- 3) **In a Medical Emergency Dial 111 and ask for Ambulance Assistance.**
- 4) **Address: 101 Morrison Road, Komata (Paeroa)**
- 5) *Should this be necessary, ensure that a club member is at the road entrance to meet the Ambulance and direct them down to the site. Ensure that any cars parked blocking the entrance are moved.*

### 19.2

- 1) Cell phone is the most practical method from the range; or alternatively there is a
- 2) Landline at the clubrooms

## 20 Accident/incident procedure

### 20.1 Accidents not involving a Firearm:

- 1) If the incident meets the threshold for reporting; they are to be included in the Thames Valley Deerstalkers Assn Health and Safety Register.

**20.2 Accidents/Incidents involving involving a firearm or ammunition that result in Serious Injury or Death:**

- 1) Cease Firing.
- 2) Ensure the scene/situation is safe for all participants.
- 3) Render immediate first aid and assess the need for evacuation of the casualty to the nearest medical facility or onsite recovery by emergency services.
- 4) Make no attempt to remove or strip the firearm.
- 5) Notify the Police. **Report as an accident with a firearm causing injury or death.**
- 6) Advise the Club President or Secretary.
- 7) Advise Executive Officer NZ Deerstalkers Association – at the discretion of the RSO and/or Thames Valley Deerstalkers Assn Committee.
- 8) Record the accident / incident details in the Range Incident Register.

**NOTE: It is important that all users are aware of sect-20 Accident procedures and fully comply with this procedure in the case of any accident involving a firearm.**

**20.3 Accidents involving a bow and arrow: that result in Serious Injury or Death:**

- 1) Cease Firing.
- 2) Ensure the scene/situation is safe for all participants.
- 3) Render immediate first aid and assess the need for evacuation of the casualty to the nearest medical facility or onsite recovery by emergency services.
- 4) Make no attempt to remove or strip the bow or any other equipment.
- 5) Notify the Police. Report as an accident with a firearm causing injury or death.
- 6) Advise the Club President or Secretary.
- 8) Advise Executive Officer NZ Deerstalkers Association – at the discretion of the RSO and/or Thames Valley Deerstalkers Assn Committee.
- 8) Record the accident / incident details in the Range Incident Register.

**NOTE: It is important that all users are aware of sect-20 Accident procedures and fully comply with this procedure in the case of any accident involving a firearm.**

## 21 Fire precautions and procedures

### 21.1 Evacuation Procedures:

- 1) The Assembly area for the clubrooms in the case of a fire or incident is in the carpark as indicated on the map in the clubrooms.
- 2) In the case of a fire on the range or the property; all persons are to move to a safe area and make their way to the Assembly area in the carpark at the clubroom.
- 3) **In the case of fire Dial 111 and ask for Fire Brigade Assistance.**
- 4) **Address: 101 Morrison Road, Komata (Paeroa)**
- 5) *Should this be necessary, ensure that a club member is at the road entrance to meet the Fire engine and direct them to the site Ensure that any cars parked blocking the entrance are moved*

### 21.2 Fire Alarms and Equipment

- 1) There are a range of hoses, and water tanks that can be used initially for outside fires.
- 2) There are fully serviced fire extinguishers inside the clubrooms.
- 3) **In the case of fire Dial 111 and ask for Fire Brigade Assistance.**
- 4) **Address: 101 Morrison Road, Komata (Paeroa)**
- 5) *Should this be necessary, ensure that a club member is at the road entrance to meet the Fire engine and direct them to the site Ensure that any cars parked blocking the entrance are moved*

### 21.3 Fire Precautions and Procedures:

- 1) During the Fire Permit Season, A fire permit must be obtained from Fire Emergency New Zealand (FENZ) before any fire is contemplated.
- 2) All precautions are to be taken to reduce the possibility of fire in buildings and the surrounding grounds.
- 3) **In the case of fire Dial 111 and ask for Fire Brigade Assistance.**
- 4) **Address: 101 Morrison Road, Komata (Paeroa)**
- 5) *Should this be necessary, ensure that a club member is at the road entrance to meet the Fire engine and direct them to the site Ensure that any cars parked blocking the entrance are moved*

## 22 Range Clearance

- 1) All users are to ensure that all range rubbish, including used targets, ammunition boxes and fired cases etc, are removed from the range and disposed of in an appropriate manner.
- 2) All unwanted brass cases are to be placed into the bins provided.
- 3) **Rubbish is not to be left on the range – no exceptions.**

## 23 Unauthorised access and/or use of the range

- 1) Any Individual or organisation given use of the Thames Valley Deerstalkers Range Complex will have been provided with written authority from the Branch Committee.
- 2) Any individual or Organisation unable to provide this proof of authority must be asked to leave the property immediately.
- 3) Any refusal to leave should be reported to the Police as soon as possible.
- 4) **New Zealand Deerstalkers' Association – Thames Valley Branch Inc** committee has the jurisdiction to deal with any range misuse or misconduct as they deem appropriate.

## 24 Cone(s) of Fire (CofF)

### 24.1 Cone of Fire Table for Rifles and Pistols.

<b>CONE OF FIRE: pistol and IPSC Shotgun: 1.3 degrees (Horizontal and Vertical)</b>		
<b>Distance (Metres)</b>	<b>Radius (Metres)</b>	<b>Diameter (Metres)</b>
15	0.34	0.68
25	0.56	1.13
50	1.13	2.26
100	2.268	4.536
<b>CONE OF FIRE: Rifle 1.125 degrees (Horizontal and Vertical)</b>		
<b>Distance (Metres)</b>	<b>Radius (Metres)</b>	<b>Diameter (Metres)</b>
20	0.39	0.79
25	0.49	0.98
50	0.98	1.96
100	1.97	3.94

## 25 Inability of the shooter to achieve Cone of Fire

- 1) If for any reason any shots fired fall outside the Cone of Fire the following procedure is to occur.
- 2) The Range Officer / Duty Officer is to:
  - a) Halt all firing and identify the shooter responsible.
  - b) Observe the shooters next shot and if it falls within the Cone of Fire allow that shooter to continue shooting.
  - c) If the observed shot does not fall within the Cone of Fire, the shooter is to be provided with a suitable coach with the intention of bringing the next round within the Cone of Fire.
  - d) Shooters who are unable to achieve the Cone of Fire are to be prevented from further firing. Shooters prevented from firing in this way may resume firing, following the completion of a club approved training program with the firearm.

## 26 Unlicensed of inexperienced shooters

- 1) Unlicensed/inexperienced shooters must be managed one to one by a member and who has a current firearms license/endorsement for the firearm which they are supervising.
- 2) They are to be shown the safety aspects of using a firearm initially with an unloaded firearm.
- 3) The Range Officer/Officer on Duty is to determine the level of supervision required.

## 27 Test firing

27.1 If new firearms or new ammunition types require testing, approval to test fire must first be given by the committee of the **New Zealand Deerstalkers' Association – Thames Valley Branch Inc** committee

## 28 Air danger height (ADH)

28.1 Range 1 (100m), and Range 4 (DTL & sporting clays) have an air danger height of 100m within this complex and Ranges 2 & 3 are **No Danger Area Ranges (NDA)** and have no air danger height.

28.2 All members and range users must be made aware (during the range safety brief for ranges with an ADH) that if an aircraft is seen approaching the area that may see them fly over the club property whilst live firing is in progress, the **Range Officer / Officer on Duty** is to be made aware and must immediately call for a stop to all shooting until the hazard passes.

## 29 Range Maintenance Plan

### 29.1 Range Maintenance Plan

- 1) The TVDA Range Maintenance Plan has been approved by the SRO.
- 2) The Bullet catchers are to be kept above the minimum angle.
- 3) All unused targets and props are to be taken off the range when not in use.
- 4) Steel targets that are pitted are to be removed from the range.
- 5) Any range structure that falls below the minimum standard must be repaired immediately or the range must be closed until repaired.

## 30 Children (minors)

30.1 All children are to be under the direct supervision of an adult at all times.

30.2 Any children/minors must be under the direct supervision of a licence holder if they are using any firearm on the range.

## 31 Health and hygiene

31.1 After shooting you should wash hands before eating or drinking.

31.2 Sun protection should be used on hot summer days.

31.3 Avoid dehydration.

## 32 Domestic animals

32.1 Domestic animals are only permitted on the range with the approval of the Officer on Duty/Range Officer and must remain on a leash at all times or in a vehicle/dog box as deemed appropriate.

## 33 Additional headings

33.1 N/a

### 34 Amendment to RSOs

- 34.1 The SRO must review and approve any proposed amendment. If approved, the SRO is to submit the amendment to the Clubs and Ranges Team at Te Tari Pūreke - Firearms Safety Authority for review. If approved, the SRO can include the amendment in the RSOs with a new effective date and distribute accordingly. All previous copies of the RSOs are no longer valid.
- 34.2 Orders once “**reviewed and approved**” by NZ Police, the updated RSO’s shall be displayed on the Club Website and must be made available to all users named on the distribution list.
- 34.3 In the initial stage, this will mean that all those on the Thames Valley Deerstalkers Association Distribution List will be forwarded the RSO’s by Email (or paper copy for those not on email).

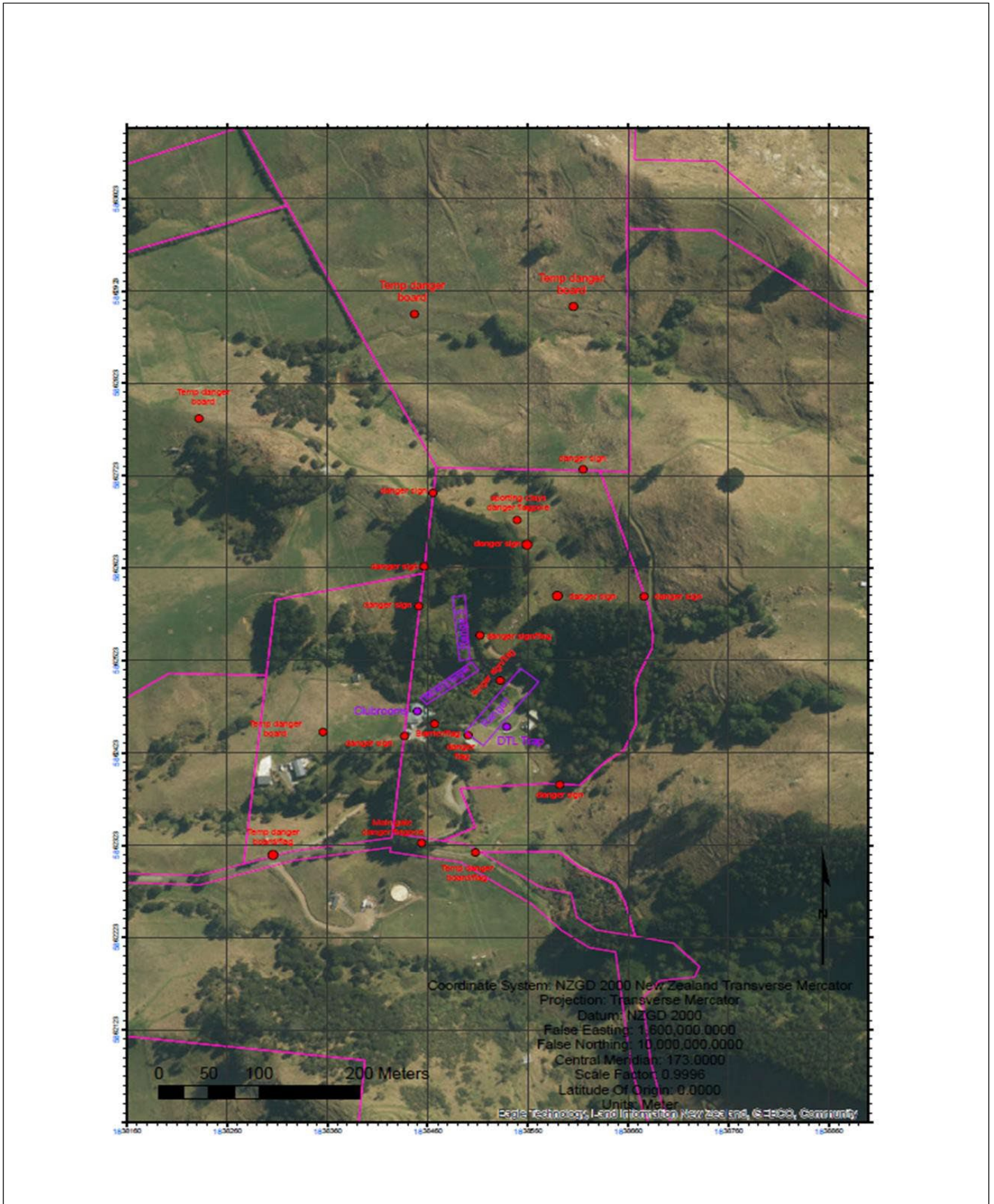
### 35 Authorisation of RSOs

- 35.1 These RSOs have been authorized by the New Zealand Deerstalkers’ Association – Thames Valley Branch Inc.

### 36 Distribution list

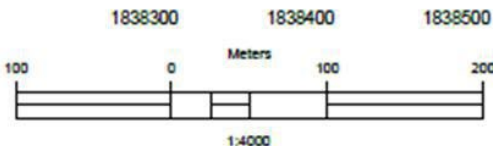
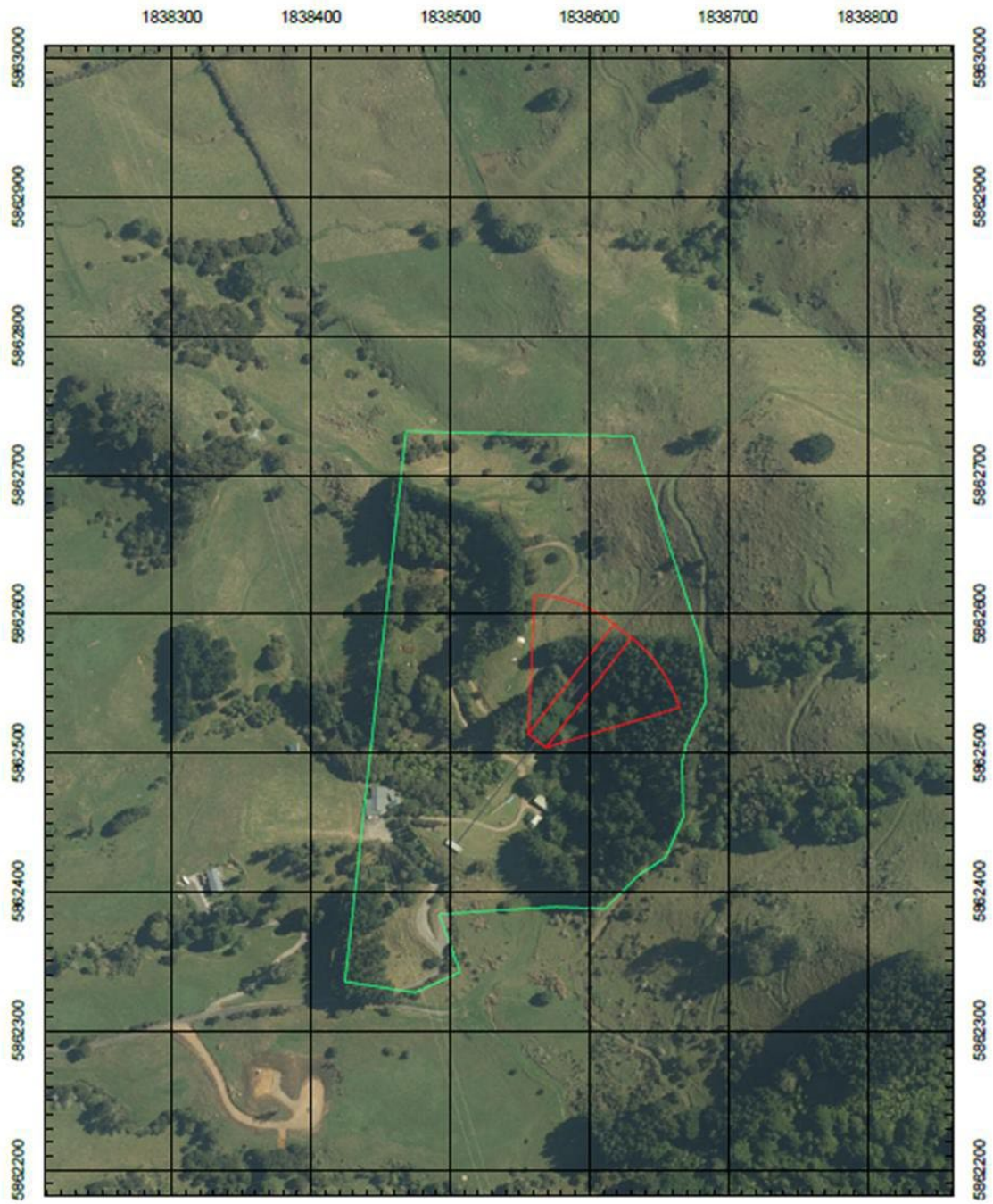
- 1) All **New Zealand Deerstalkers’ Association – Thames Valley Branch Inc.** Members.
- 2) Posted on the **New Zealand Deerstalkers’ Association – Thames Valley Branch Inc** website.
- 3) **New Zealand Deerstalkers’ Association**
- 4) NZ Police
- 5) Waikato NZDA
- 6) Te Awamutu NZDA
- 7) South Auckland NZDA
- 8) Ohinemuri Fish and Game Incorporated
- 9) Te Aroha Fish and Game Incorporated
- 10) Archery NZ
- 11) Bowhunters Society
- 12) Black Powder New Zealand.

**A. Range layout and location:**



**Annex B**

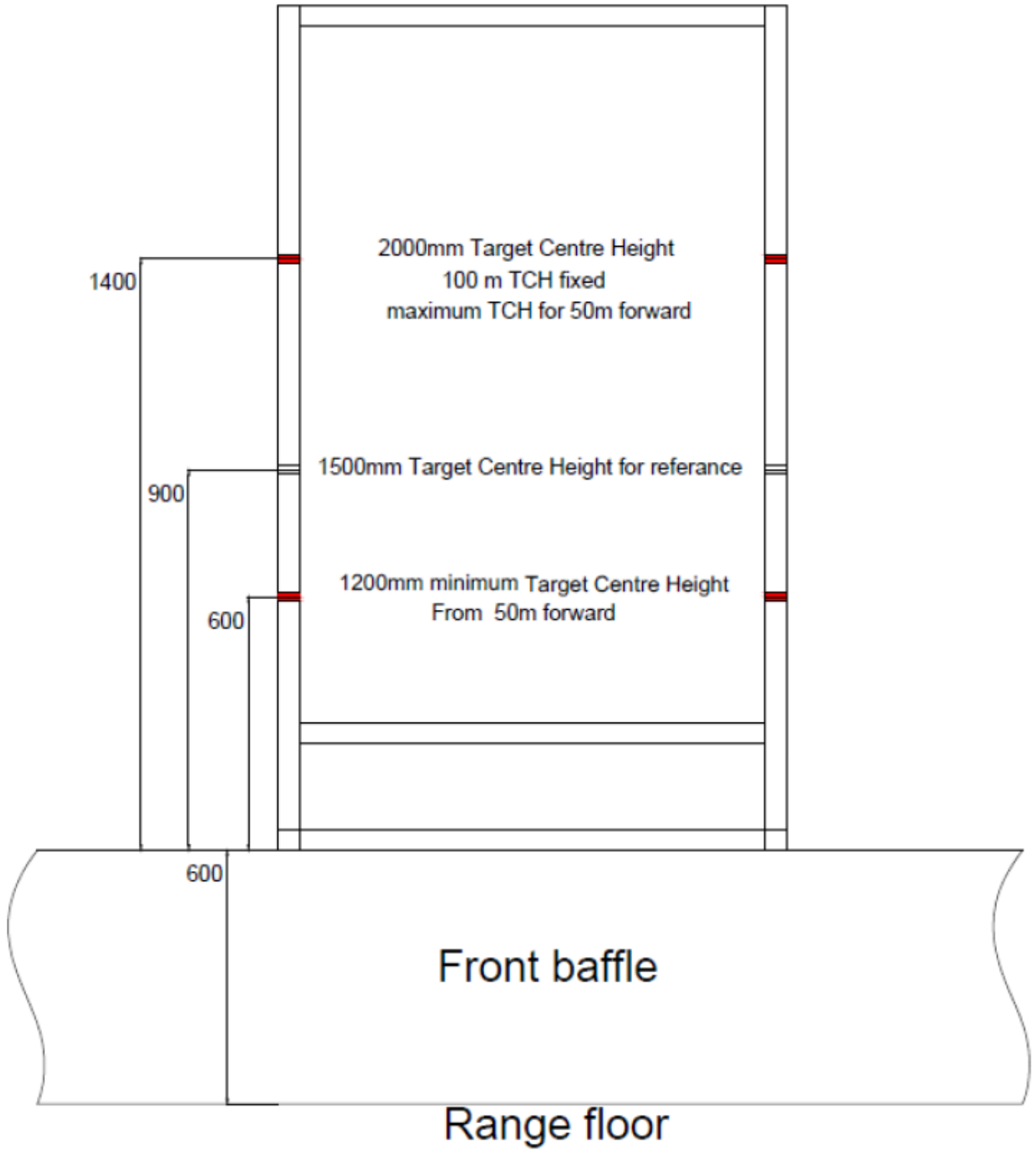
**Range 1 (100m Range) (RDA with a 100m Pop-over)**



**ADAT  
TVDA  
100M  
Range 1 (RDA pop over)**

Coordinate System: NZGD 2000 New Zealand Transverse Mercator  
Projection: Transverse Mercator  
Datum: NZGD 2000  
False Easting: 1,500,000.0000  
False Northing: 10,000,000.0000  
Central Meridian: 173.0000  
Scale Factor: 0.9996  
Latitude Of Origin: 0.0000  
Units: Meter

**Range 1 – (Target specifications)**



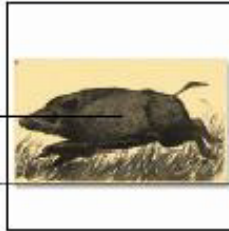
**Range 2 (Running Boar Range)**

**Range Specifications (No Danger Range) N/a**

**Target Specifications**

Moving and static targets visible up to a 1200mm maximum  
Target centre height from butts floor  
at centre of opening

visible to 1200mm



***Range 3 (50m Gully Range)***

*Insert map or layout of Range 3 (50m Gully Range)*

***This is to be done once it is completed***

**Range 3 (50m Gully Range)**

**Range Specifications (No Danger Range)    N/a**

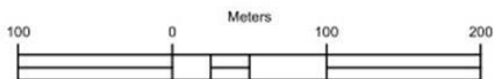
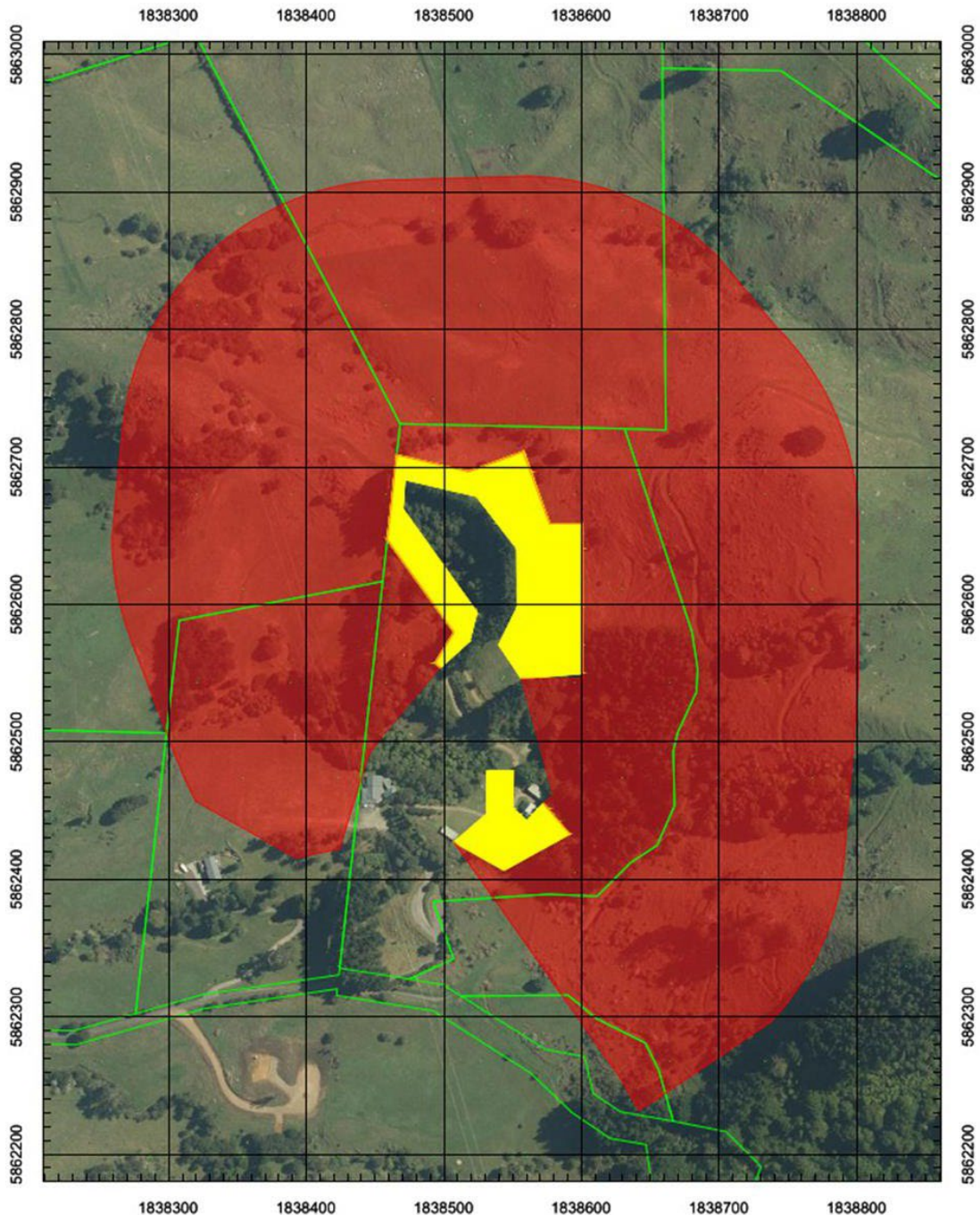
**Target Specifications**



**Range 4 (Clay Targets)**

**Range Specifications**

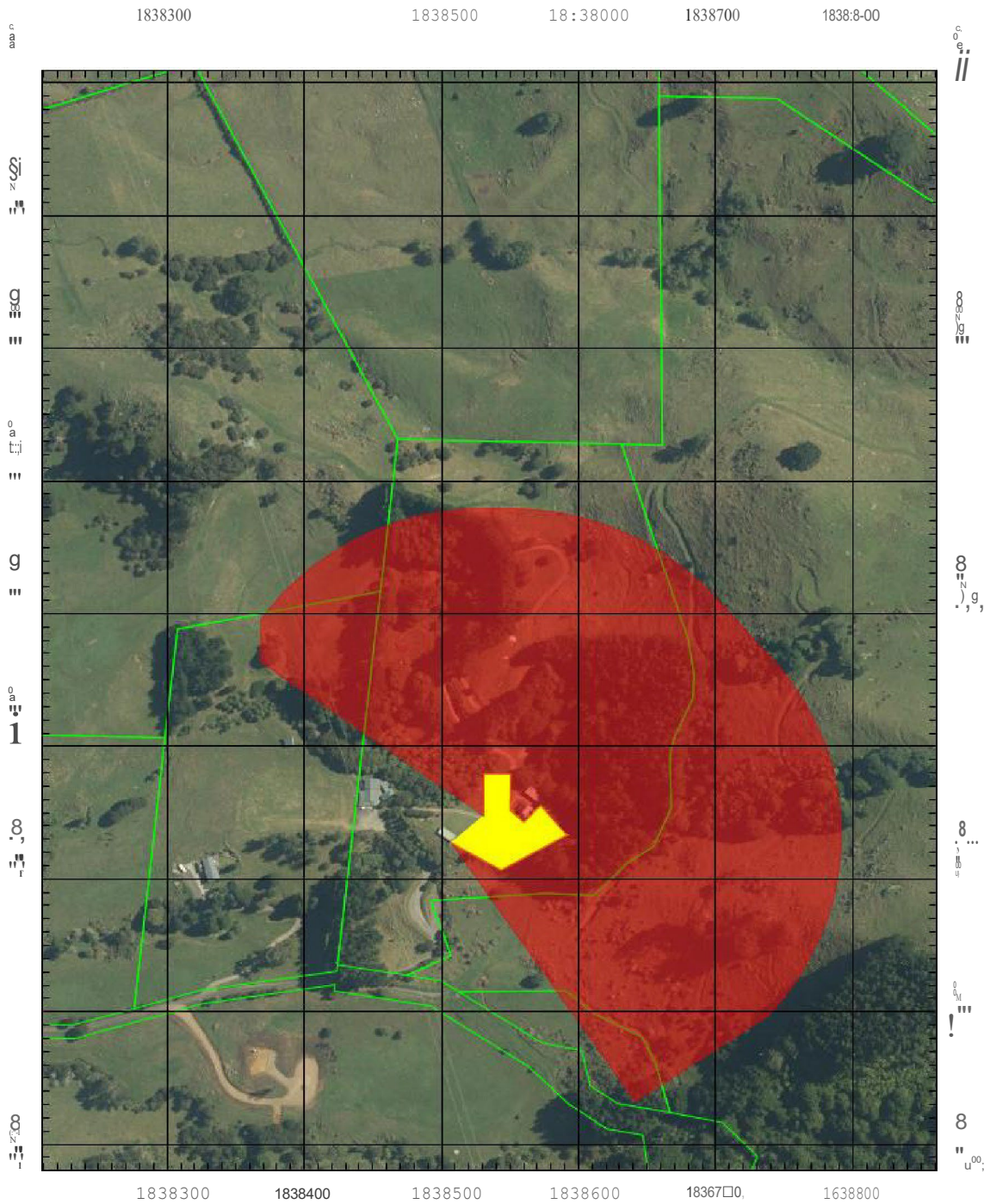
**Full Sporting Clay Field (North and South Fields Combined)**



**ADAT  
TVDA  
SPORTING CLAYS**

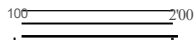
Coordinate System: NZGD 2000 New Zealand Transverse Mercator  
Projection: Transverse Mercator  
Datum: NZGD 2000  
False Easting: 1,600,000.0000  
False Northing: 10,000,000.0000  
Central Meridian: 173.0000  
Scale Factor: 0.9996  
Latitude Of Origin: 0.0000  
Units: Meter

# Sporting Clay Field – South Field only



100

M:Flara



ADAT

FL  
1:4000

*t*

TVDA  
SPORTING CLAYS  
South Field only

C:StieJII;t:QITI- Ni:GO 200() NRY Zsul.am;3 Tr;M11 ..cjr MIdn;..dl::  
Prjji;..r:lioo TranSV-C M r;..vbQr  
□Mu NZGO :2000  
F;al5e, Ell5ting. 1,600,000.0000  
Falee Noo:1111\*0: 10,000,000,0000J  
GeF\*trllriiirillrt. 173.0000  
Scall FaGmr a.911-96  
Ls -IK18 Of O'I : C.J.0000  
Urli:-Ei: M ler

**Sporting Clay Shooting Box Reference Map**



## Grid References for Clay Target Fields

Thames Valley Deer Stalkers sporting Clay Range  
 Location: NZ Topo 50 BC35 3854,6253 (north field centre)  
 Sporting Shotgun Shooting box North field

dir deg mag		dir deg grid	
left of arc	right of	left of arc	right of
200	125	220	145

Reference map for box grid points

A		3850	6255
B		3849	6256
C		3851	6258
D		3846	6265
E		3847	6271
F		3852	6269
G		3856	6271
H		3858	6266
I		3860	6266
J		3860	6255
K		3856	6254
L		3854	6257
M		3856	6260
N		3856	6264
O		3853	6268
P		3847	6269
Q		3847	6266
R		3853	6259
S		3852	6257

Location: NZ Topo 50 BC35 3854,6253 (south field centre)

Sporting Shotgun Shooting box south field

dir deg mag		dir deg grid	
left of arc	right of	left of arc	right of
286	125	306	145

Reference map for box grid points

A		3851	6243
B		3851	6240
C		3860	6243
D		3858	6245
E		3857	6244
F		3855	6245
G		3855	6247
H		3853	6247
I		3853	6245

### C. Additional shooting organisations:

- |                                |  |
|--------------------------------|--|
| 1) NZ Police                   | ( See Annex F for Specific Rules)      |
| 2) Ohinemuri Fish and Game Inc | (operating solely with the TVDA RSO's) |
| 3) Te Aroha Fish and Game Inc  | (operating solely with the TVDA RSO's) |
| 4) Waikato NZDA                | (operating solely with the TVDA RSO's) |
| 5) Te Awamutu NZDA             | (operating solely with the TVDA RSO's) |
| 6) South Auckland NZDA         | (operating solely with the TVDA RSO's) |

**D. Any other relevant information**

*Information, tables and images that are more suited to be included as an Annex to reduce clutter in the main body of the RSOs.*

**ESSENTIAL REQUIREMENT FOR an Officer on Duty  
BEFORE USING ANY THAMES VALLEY DEERSTALKERS ASSOCIATION (TVDA) RANGE/S, YOU MUST HAVE  
READ AND FULLY UNDERSTAND THE FOLLOWING POINTS.**

***A Duty Officer is anyone using the range without a certified Range Officer officiating. NO EXCEPTIONS***

**Officer on Duty**

**1.10** A range certificate is granted subject to the condition that, at all times while the certified shooting range is in use, an officer is on duty who:

- a. holds a firearms licence, and
- b. is appropriately trained in shooting range safety management.

**If you have NOT read and/or do NOT fully understand all the points below; you CAN NOT USE ANY RANGES AT TVDA – NO EXCEPTIONS**

***\*\*\*\* If you do use the range with reading and/or fully understanding the point below, then you will be breaking the law \*\*\*\****

**1.11** Shooting range safety management training must cover the duties and responsibilities of the officer on duty which include:

- a. understanding and compliance with range standing orders,
- b. the correct preparation and set up of the range before firing begins, including clearance of the danger area,
- c. that only approved firearms, calibres and ammunition are used on the range,
- d. that they supervise all shooters and inspect firearms and ammunition in accordance with the respective shooting discipline requirements, e.g. specific range safety procedures, match/competition rules,
- e. that only approved targets are used, and target placement is correct,
- f. the control and supervision of firearms security and safe firearms handling within the range environment,
- g. that they assign shooters to targets,
- h. the safe conduct of the shooting activity using appropriate range commands (for the respective shooting discipline) and clearance of firearms, i. that they report all breaches of range standing orders to the shooting range operator,
- j. the appropriate control of all non-firing participants while firing is in progress, and
- k. the procedure to follow in an emergency.

**1.12** When there are one or more shooters on the range, one of these must be designated as the Officer on Duty.

The officer on duty can fulfil their role as described in paragraph 1.11 above and participate as a shooter, provided they ensure that they can always maintain control of the range.

Annex E:

## MUZZLE ENERGY CHART

	fps	800	1000	1200	1400	1600	1800	2000	2200	2400	2600	2800	3000	3200	3400	3600	3800	4000
grains	grams m/s	243.83	304.79	365.74	426.70	487.66	548.61	609.57	670.53	731.48	792.44	853.40	914.36	975.31	1036.27	1097.23	1158.18	1219.14
40	2.59	77	120	173	236	308	390	482	583	693	814	944	1084	1233	1392	1560	1738	1926
50	3.24	96	150	217	295	385	488	602	728	867	1017	1180	1354	1541	1740	1950	2173	2408
60	3.89	116	181	260	354	462	585	722	874	1040	1221	1416	1625	1849	2088	2340	2608	2889
70	4.54	135	211	303	413	539	683	843	1020	1214	1424	1652	1896	2157	2436	2730	3042	3371
80	5.18	154	241	347	472	616	780	963	1165	1387	1628	1888	2167	2466	2783	3121	3477	3853
90	5.83	173	271	390	531	693	878	1084	1311	1560	1831	2124	2438	2774	3131	3511	3912	4334
100	6.48	193	301	433	590	771	975	1204	1457	1734	2035	2360	2709	3082	3479	3901	4346	4816
110	7.13	212	331	477	649	848	1073	1324	1602	1907	2238	2596	2980	3390	3827	4291	4781	5297
120	7.78	231	361	520	708	925	1170	1445	1748	2080	2442	2832	3251	3698	4175	4681	5215	5779
130	8.42	250	391	563	762	992	1268	1565	1894	2254	2645	3068	3521	4007	4523	5071	5650	6260
140	9.07	270	421	607	826	1079	1365	1685	2039	2427	2848	3304	3792	4315	4871	5461	6085	6742
150	9.72	289	451	650	885	1156	1463	1806	2185	2600	3052	3540	4063	4623	5219	5851	6519	7223
160	10.37	308	482	693	944	1233	1560	1926	2331	2774	3255	3775	4334	4931	5567	6241	6954	7705
170	11.02	327	512	737	1003	1310	1658	2047	2476	2947	3459	4011	4605	5239	5915	6631	7388	8187
180	11.66	347	542	780	1062	1387	1755	2167	2622	3121	3662	4247	4876	5548	6263	7021	7823	8668
190	12.31	366	572	823	1121	1464	1853	2287	2768	3294	3866	4483	5147	5856	6611	7411	8258	9150
200	12.96	385	602	867	1180	1541	1950	2408	2913	3467	4069	4719	5418	6164	6959	7801	8692	9631
210	13.61	405	632	910	1239	1618	2048	2528	3059	3641	4273	4955	5688	6472	7307	8191	9127	10113
220	14.26	424	662	953	1298	1695	2145	2649	3205	3814	4476	5191	5959	6780	7654	8581	9561	10594
230	14.90	443	692	997	1357	1772	2243	2769	3350	3987	4680	5427	6230	7089	8002	8972	9996	11076
240	15.55	462	722	1040	1416	1849	2340	2889	3496	4161	4883	5663	6501	7397	8350	9362	10431	11558
250	16.20	482	752	1084	1475	1926	2438	3010	3642	4334	5087	5899	6772	7705	8698	9752	10865	12039
275	17.82	530	828	1192	1622	2119	2682	3311	4006	4767	5595	6489	7449	8476	9568	10727	11952	13243
300	19.44	578	903	1300	1770	2312	2926	3612	4370	5201	6104	7079	8126	9246	10438	11702	13038	14447
325	21.06	626	978	1409	1917	2504	3169	3913	4734	5634	6612	7669	8804	10017	11308	12677	14125	15651
350	22.68	674	1053	1517	2065	2697	3413	4214	5099	6068	7121	8259	9481	10787	12178	13652	15211	16855
375	24.30	722	1129	1625	2212	2889	3657	4515	5463	6501	7630	8849	10158	11558	13047	14628	16298	18059
400	25.92	771	1204	1734	2360	3082	3901	4816	5827	6935	8138	9439	10835	12328	13917	15603	17385	19263
425	27.54	819	1279	1842	2507	3275	4144	5117	6191	7368	8647	10029	11512	13099	14787	16578	18471	20467
450	29.16	867	1354	1950	2655	3467	4388	5418	6555	7801	9156	10619	12190	13869	15657	17553	19558	21670
475	30.78	915	1430	2059	2802	3660	4632	5719	6919	8235	9664	11208	12867	14640	16527	18528	20644	22874
500	32.40	963	1505	2167	2950	3853	4876	6020	7284	8668	10173	11798	13544	15410	17397	19503	21731	24078

joules



**Police Annex F to the Thames Valley Deerstalkers Association  
Range Standing Orders**

<b>1 Name/Number of individual range(s) Police are approved to use (if applicable)</b>	
1.1 Thames Valley Deerstalkers Association – Range 1.	
<b>2 Intended Dates/Hours of Use (where applicable)</b>	
2.1 Dates / Hours of Use: As approved by the Thames Valley Deerstalkers Association Committee.	
<b>3 Responsibility</b>	
<i>The person/member of Police by appointment responsible for liaison and bookings with the SRO.</i>	
3.1 Tactical Commander, NZ Police Armed Offenders Squad (AOS) Waikato (or delegate). 3.2 Team Leader Waikato Tactical Options Training Team (or delegate).	
<b>4 Compliance with Range Standing Orders (RSOs)</b>	
4.1 Police must comply with these RSOs, to be read in conjunction with this Annex.	
4.2 Only Police approved Courses of Fire to be used.	
4.3 Non-compliance may result in the removal of Police as an approved user.	
<b>5 Approved range users and priority of use</b>	
5.1 Police must be listed as an approved range user and are subject to the priority of use as laid down in these RSOs.	
<b>6 Warning flags and danger signs</b>	
6.1 All flags and danger signs are to be raised/operated in accordance with these RSOs.	
<b>7 Police restrictions, and conditions of use</b>	
<b>7.1 Range (Number or name):</b>	Thames Valley Deerstalkers Association – Range 1.
<b>Restrictions</b>	<p><b>7.1.1 Approved firearms:</b></p> <ul style="list-style-type: none"> <li>(a) M4 (5.56mm/.223)</li> <li>(b) LaRue (.308)</li> <li>(c) MP5 (9mm)</li> <li>(d) Glock 17 (9mm)</li> <li>(e) Glock 43 (9mm)</li> <li>(f) B&amp;T Launcher (40mm, less lethal)</li> </ul> <p><u>Or any:</u></p> <ul style="list-style-type: none"> <li>(g) Authorised Police Firearm that Police have lawful authority to use</li> </ul>
<b>Conditions of use</b>	<p>7.1.2</p> <ul style="list-style-type: none"> <li>(a) Approved Police methods of firearms carriage and weapon handling will be adopted on this range.</li> <li>(b) Approved Police methods of tactical movement will be adopted on this range.</li> </ul>

## 8 Range safety roles

8.1 All Range Conducting Officers (Officers on Duty) are qualified and appropriately trained in accordance with the Arms Act 1983 and are exempt of the requirement to hold a firearms licence. A list of qualified RCOs (by QID) who have assumed the responsibility from time to time will be provided to the SRO on request.

8.2 All Safety Officers are qualified and appropriately trained in accordance with the Police Firearms Instructors Course.

8.3 At least one (1) Police qualified training instructor in attendance at the training day must have completed a TVDA Range Induction.

## 9 Range safety rules

9.1 Police must comply with the range safety rules listed in these RSOs.

9.2 Only approved Police courses of fire are to be conducted on the range approved for use.

9.3 Police may apply additional range safety rules for shooting activities but must not contravene the RSOs.

## 10 New ammunition use

10.1 Any new ammunition must be approved by the SRO before use in accordance with these RSOs.

10.2 This includes:

- Authorised Police Ammunition.
- Ammunition that Police have lawful authority to use.

## 11 Targets

11.1 Only Police targets approved by the Club committee are to be used on Range 1.

11.2 All targets shall be mounted, positioned in a manner that is sturdy, presents the target perpendicular to the firing position, and minimises risk of ricochet.

11.3 Targets shall be positioned so that projectiles fall within the boundaries of the bullet catcher at a 1.2m target centre height.

## 12 Steel targets

12.1 Approved steel targets may be used in accordance with these RSOs.

## 13 Moving targets

13.1 Approved moving targets may be used in accordance with these RSOs.

## 14 Minimum safe engagement distances

14.1 There is a 3m minimum safe engagement distance for paper targets on Range 1.

## 15 Eye and hearing protection

15.1 Police approved hearing protection is to be worn.

15.2 Police approved eye protection is to be worn unless the RCO directs otherwise.

## **16 Medical and emergency**

16.1 A Police tactical medical kit shall be situated in the Police Equipment Van that is always located on site at the range when training is taking place during Police use.

16.2 Medical procedures shall be in accordance with these RSOs.

## **17 Accident/incident procedure**

17.1 In accordance with these RSOs.

## **18 Fire precautions and procedures**

18.1 In accordance with these RSOs.

## **19 Range Clearance**

19.1 Coverboards to be inspect before and after range use to ensure they remain fit for purpose.

19.2 All further range clearance procedures shall be in accordance with these RSOs.

19.3 All Taser wire, barbs, tabs etc to be picked up after use when they have been deployed for training purposed anywhere on TVDA Grounds.

## **20 Cone(s) of Fire (CofF)**

20.1 Police cones of fire have been approved in accordance with these RSOs.

## **21 Inability of the shooter to achieve Cone of Fire**

21.1 In accordance with these RSOs.

## **22 Authorisation of the Police Annex to RSOs**

22.1 The SRO is to approve the inclusion of the Police Annex in these RSOs before any Police shooting activity is conducted.